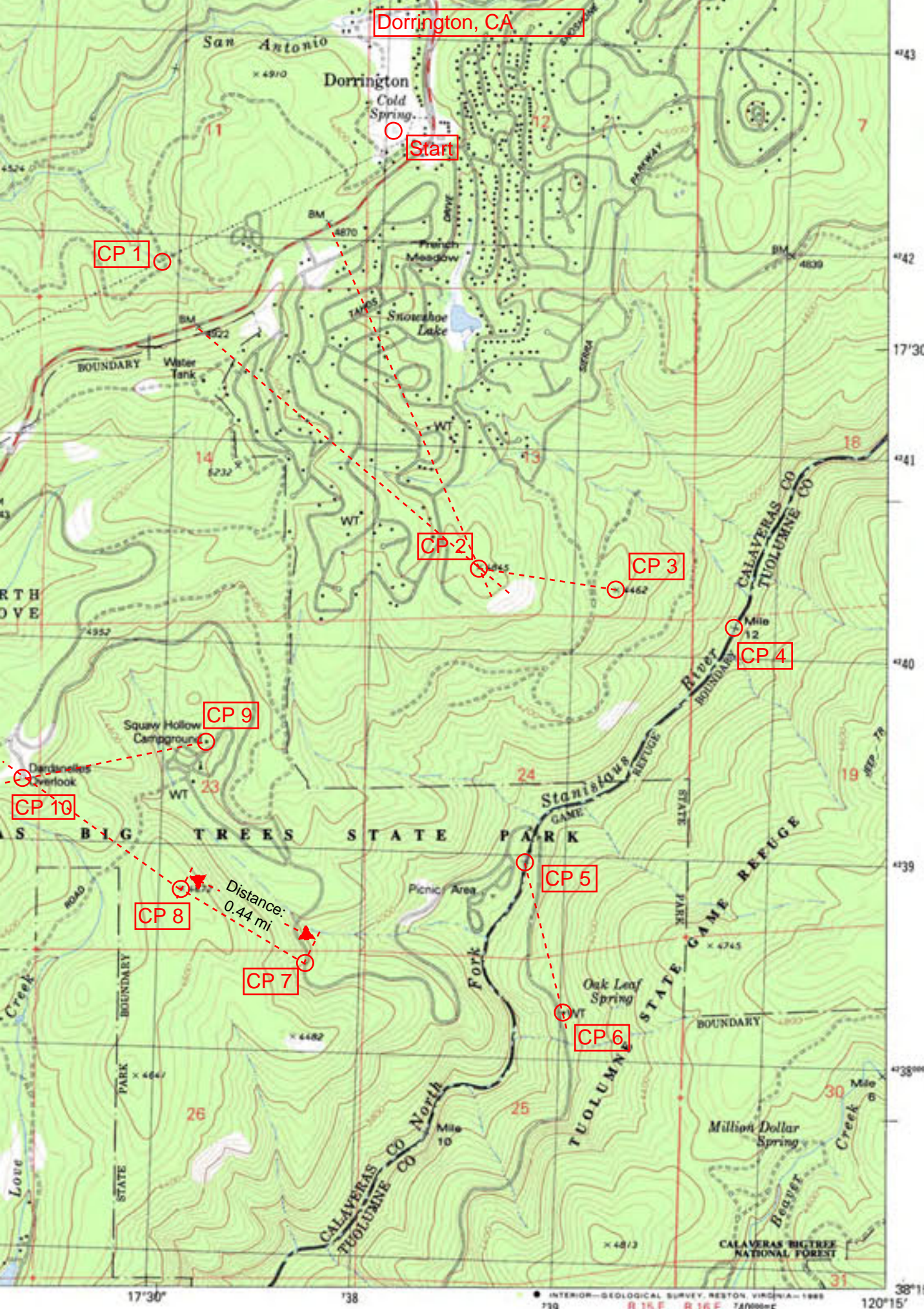


## Challenge 8. – Dorrington, CA

Round 8 takes your team back to California and the Sierra Foothills for some fun in the redwoods.

Check Point	Instruction	Question	Answer
Start	Find Dorrington Cold Spring	Give the UTM of the spring.	0738040 4242550
CP 1	Follow the power transmission line WSW until it crosses a seasonal stream.	What is the elevation of this point?	4640 feet
CP 2	From BM4922 Plot a bearing of 129° From BM4870 Plot a bearing of 155°	What is the elevation at the intersection of these two bearings?	4845 feet
CP 3	Plot UTM 0739200 4240330	What is the straight line distance in meters between CP2 and CP3	675 meters
CP 4	Bushwhack to mile 12 on the North Fork of the Stanislaus River.	How many contour lines did you cross?	18
CP 5	Follow the river downstream for 1 mile.	What is the UTM of this point?	0738800 4238970
CP 6	Travel back upstream to the nearest road and take the road to the South East of the river until you come to the Water Tank.	What is the bearing from CP5 to the Water Tank?	164.5°
CP 7	Follow the road back to the bridge and continue until you cross the 4200 contour line.	What is the UTM of this point?	0737730 4238440
CP 8	From CP 7 follow a bearing of 300° for 0.44 of a mile.	What is the elevation of this point?	4672 feet
CP 9	Find the only building in Squaw Hollow Campground	What is the distance in meters from CP 8 to this building?	740 meters
CP 10	From CP 8 plot a bearing of 304° From CP 9 plot a bearing of 257.5°	What is at the intersection of these two bearings?	Dardanelles Overlook
Finish	<b>Go to <a href="http://www.ARNavigSupplies.com">www.ARNavigSupplies.com</a> and check your answers</b>		



Dorrington, CA

Start

CP 1

CP 2

CP 3

CP 4

CP 10

CP 9

CP 8

CP 7

CP 5

CP 6

Distance:  
0.44 mi

17°30'

138

INTERIOR-GEOLOGICAL SURVEY, RESTON, VIRGINIA-1988  
710 R 15 E R 16 E T40000c

120°15'